

SOFTWARE DEFINED NETWORKING A BEST PRACTICE APPROACH

INTRODUCING SD-WAN

SD-WAN is the practice of simplifying WAN management by decoupling the hardware itself from the management interface.



Benefits include:

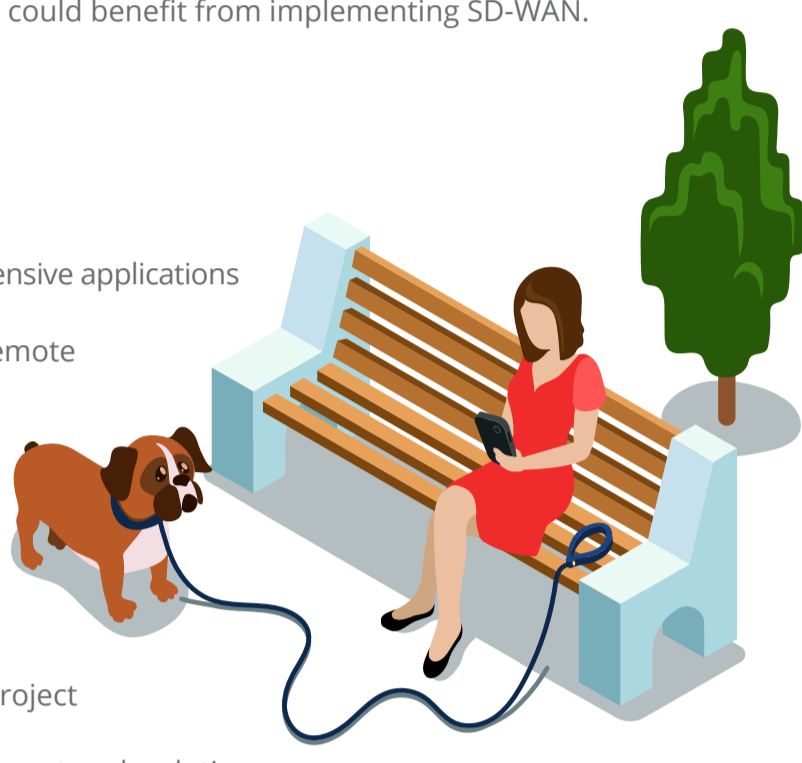
- ✓ Improved application performance
- ✓ More efficient bandwidth utilisation
- ✓ Streamlined network management
- ✓ Rapid service deployment
- ✓ Alignment of network services to business needs
- ✓ Reduction of network & application downtime
- ✓ Lower total cost of network ownership

WHO NEEDS SD-WAN?

Any business that relies on public or private networks to deliver services to their employees, customers or partners could benefit from implementing SD-WAN.

Start looking at SD-WAN when:

- 👍 Your existing WAN contract is due to expire
- 👍 You're deploying video or other bandwidth-intensive applications
- 👍 You're deploying hybrid WAN topologies at remote office locations
- 👍 You want to make better use of back-up or redundant WAN circuits
- 👍 You're planning an infrastructure refresh of traditional branch routers
- 👍 You're undertaking a digital transformation project
- 👍 You want to migrate away from MPLS or other network solutions
- 👍 You need to make more efficient use of available bandwidth
- 👍 You want to improve application performance and resilience



WHAT CHALLENGES DOES SD-WAN ADDRESS?

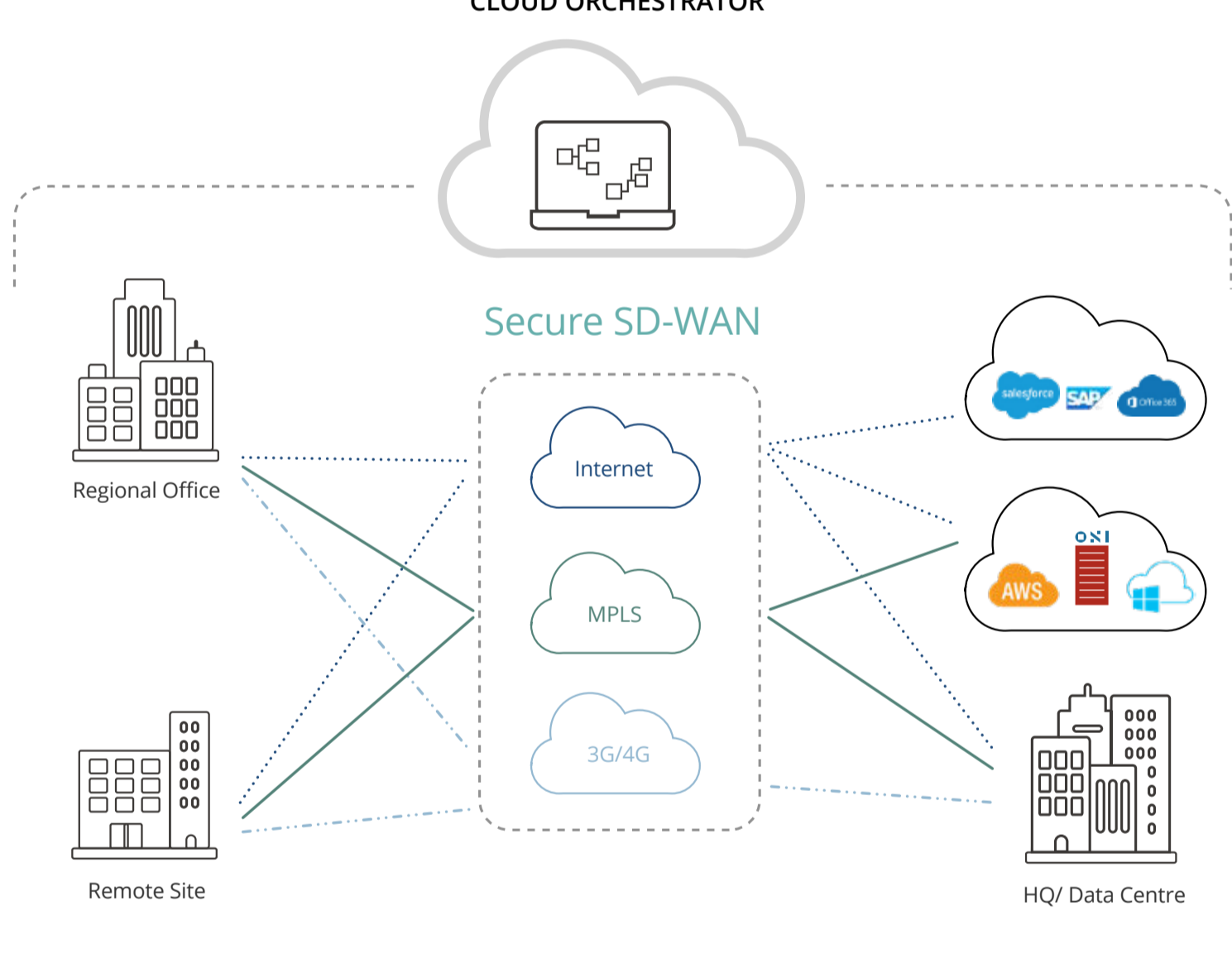
Deploying an SD-WAN solution can help address many of the challenges affecting businesses in a fast moving and competitive marketplace.



HYBRID WAN

The right SD-WAN solution ensures that application performance meets service level requirements and user expectations. Hybrid WAN incorporates elements of Internet, MPLS and 3G/4G connectivity for path selection.

CLOUD ORCHESTRATOR



ALIGNING YOUR NETWORK TO BUSINESS OBJECTIVES

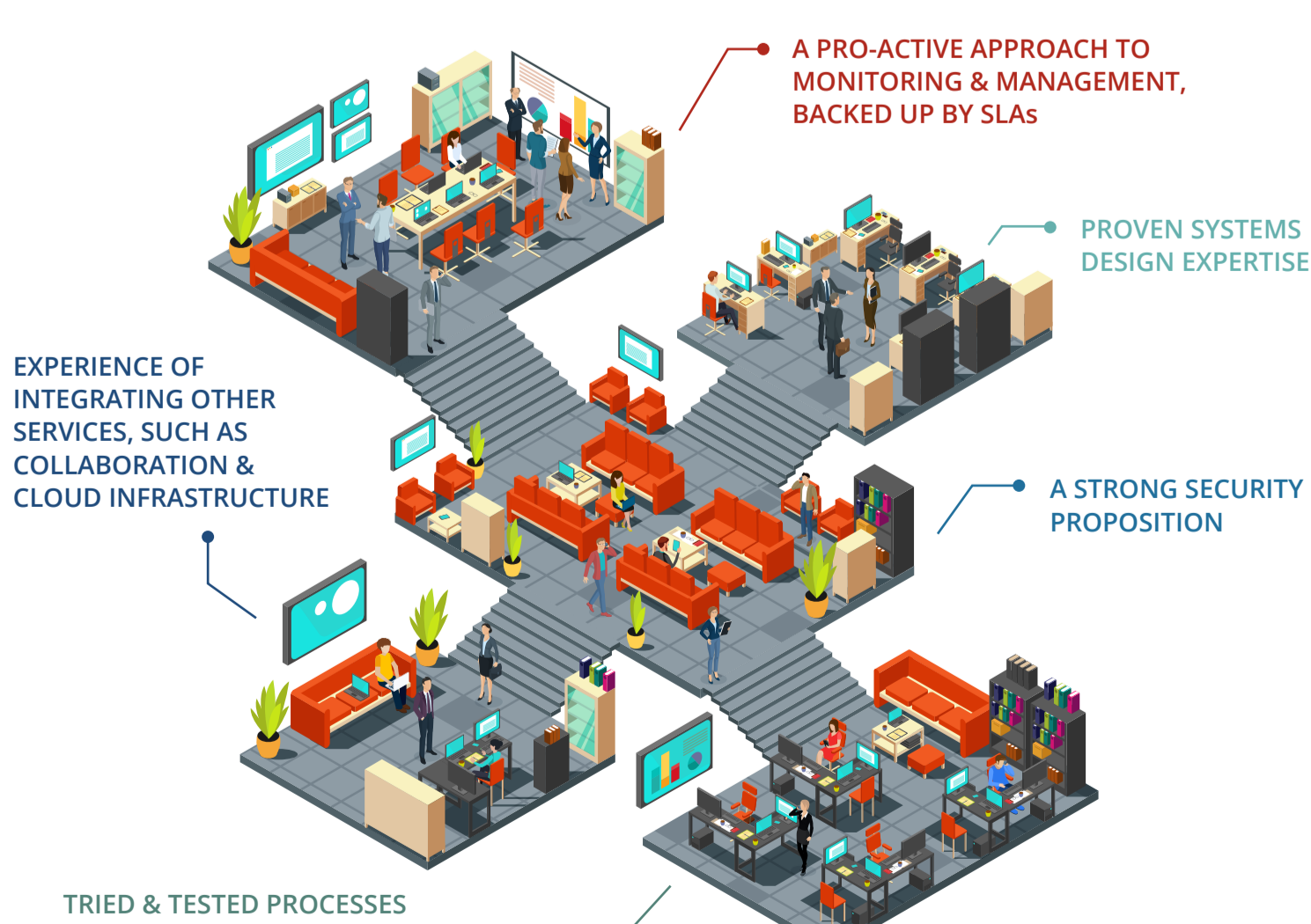
It's vital that your technology estate provides the scalability and agility necessary to align it with your broader business objectives.



- 1** Manage & support network & cloud access across multiple locations
- 2** Deploy bandwidth-intensive applications to improve customer experience
- 3** Control equipment costs for remote/branch locations
- 4** Support the delivery of all business-critical services to remote/branch locations
- 5** Improve service availability & uptime
- 6** Reduce lead times for new service delivery
- 7** Reduce overall IT expenditure across the WAN

WHAT TO LOOK FOR IN AN MSP

SD-WAN is still a relatively new technology, so it's important to choose a managed service provider that can deliver on all the potential benefits. Make sure yours has:



[DOWNLOAD OUR BEST PRACTICE GUIDE >](#)